

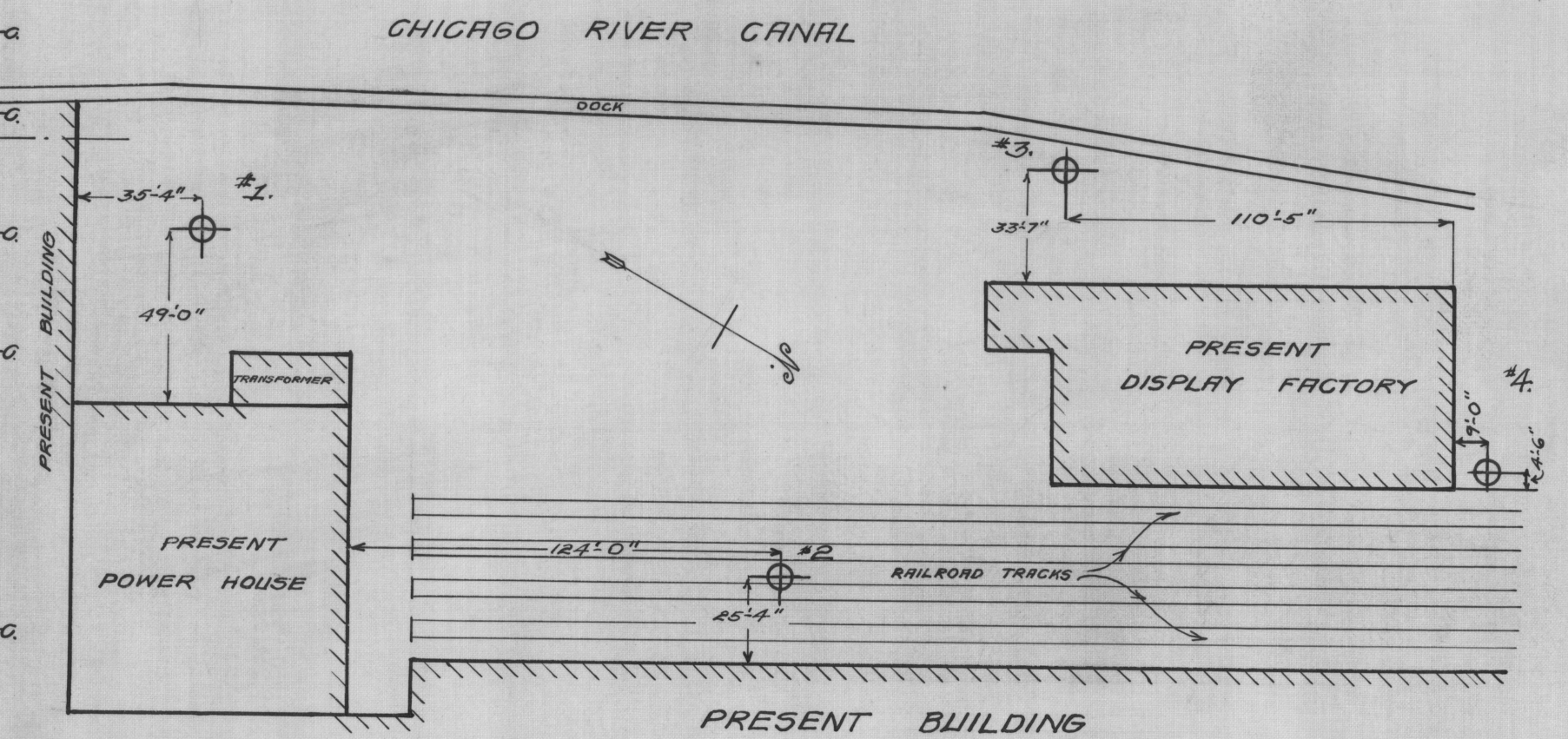
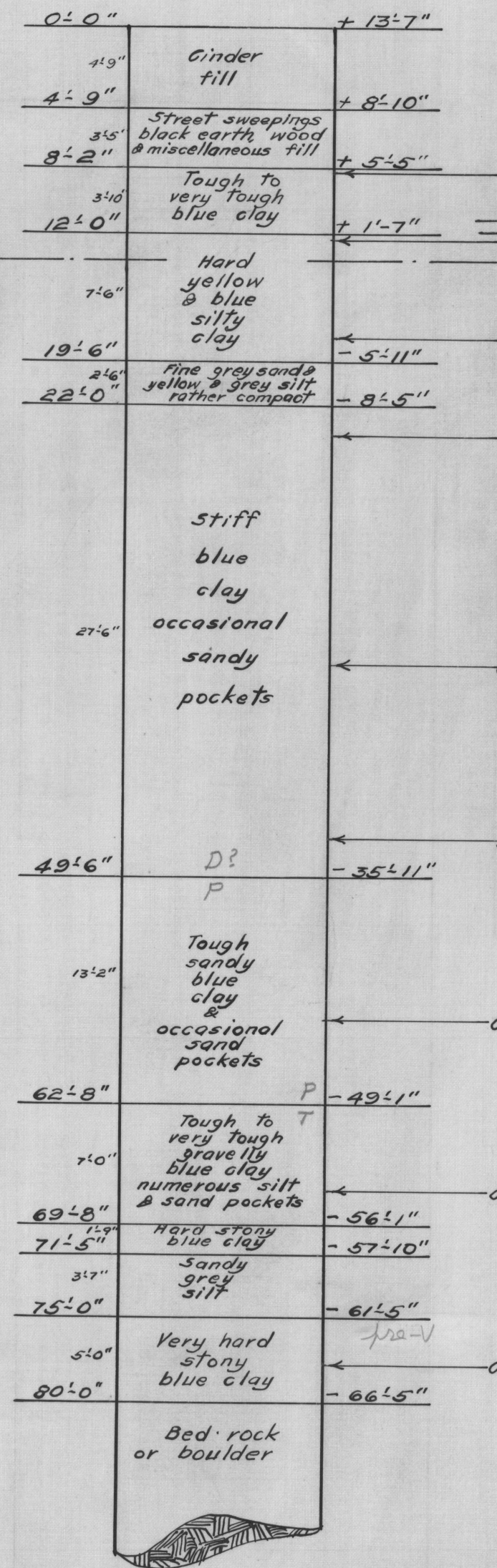
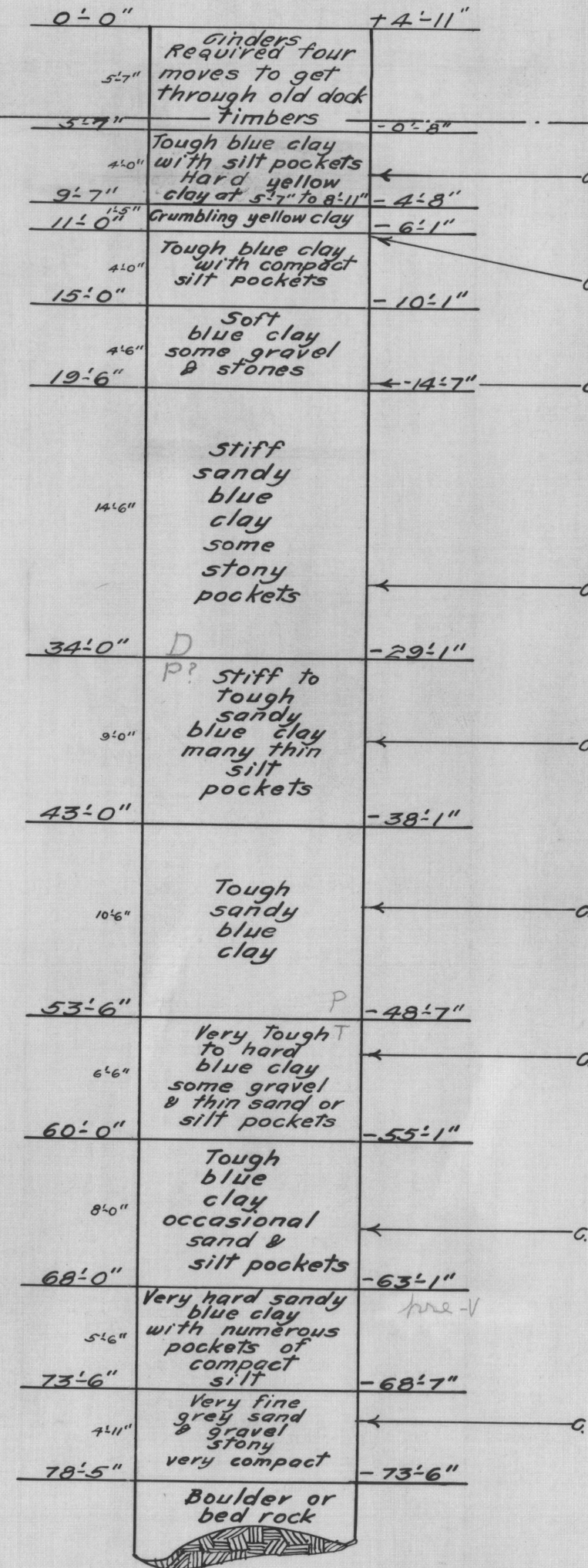
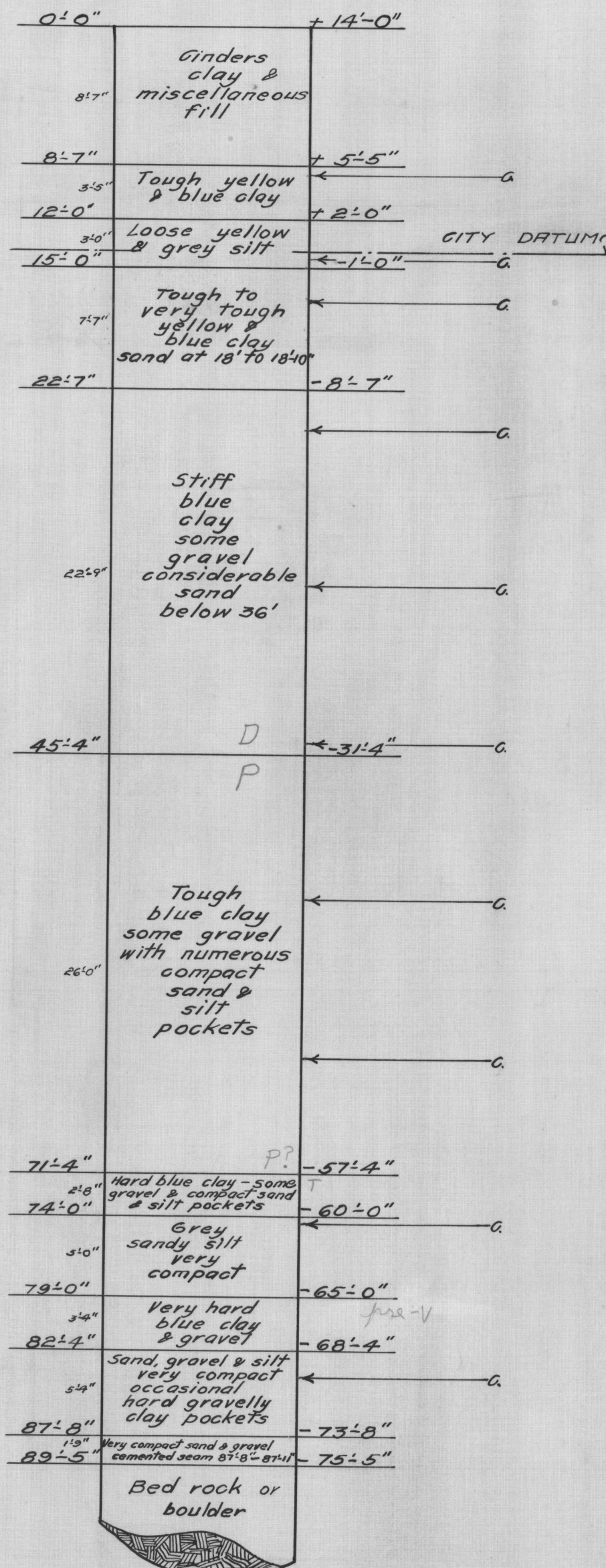
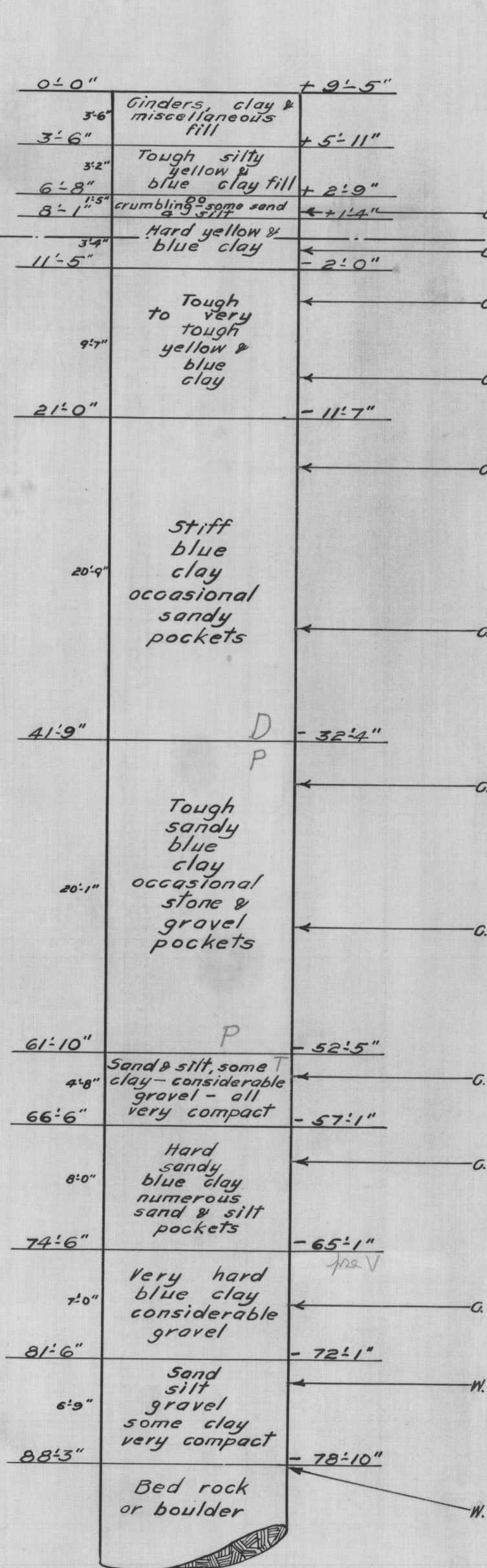
Test Borings

#1.

#2.

#3.

#4.



Plat of Borings

NOTES:
 G indicates Core Sample Taken.
 W. indicates Wash.
 Ground water encountered at Elev. +5'-5" approximately, except in #3 where it stands at +0'-11" or about river level.
 The upper 14' to 20' of clay at this site varies in composition, also in bearing value. It ranges from tough to hard clay - some yellow, some blue or mixed yellow & blue. It contains considerable quantities of silt, sand & gravel embedded in the clay, also numerous pockets a fraction of an inch to several feet in thickness were encountered.
 The blue clay below Elev. -15' also contains much silt, sand & gravel, with numerous pockets of the same material. Occasional spots in the softer clay showed a tendency to swell in drilling through it.
 In the 10' to 12' immediately above the rock, beds of sand silt & gravel up to several feet in thickness were encountered in each of the borings. This granular material predominates in this zone, and will probably be found water bearing in excavations to the bed rock.

MAP ROOM
 4103
 a-4
 sh 221
 ILLINOIS GEOLOGICAL SURVEY LIBRARY

MONTGOMERY - WARD & COMPANY
 CHICAGO AVENUE BRIDGE
 CHICAGO, ILL.

Test Borings

Date	R. C. Smith - Civil Engineer.	Job
MAY 1939.	G. A. Nordgren - Manager.	801.