

BORING #1

0:0"		+22:7"
0:9"	9" Black earth	+21:10"
2:11"	2:2" Tough yellow clay dirty.	+19:8"
4:1"	1:2" Black earth + clay	+18:6"
4:4"	4:4" Tough yellow clay + loam	C.S.
8:5"		+14:2"
9:4"	0:11" Stiff blue clay	+13:3"
6:2"	Tough blue clay.	C.S.
15:6"		+7:1"
17:8"	2:2" Hard blue clay + sand	C.S.
9:9"	Very hard sand-silt + loam	C.S.
0:0"	Some hard clay.	0:0"
27:5"		-4:10"
4:3"	Very hard blue clay sandy.	C.S.
31:8"		-9:1"
		C.S.

BORING #2

0:0"		+23:0"
0:6"	6" Concrete.	+22:6"
2:0"	1:6" Cinder fill.	+21:0"
3:6"	1:6" Clay fill.	+19:6"
5:2"	1:8" Black earth + clay.	+17:10"
8:8"	3:6" Tough yellow clay + loam	C.S.
		+14:4"
5:8"	Tough blue clay.	C.S.
14:4"		+8:8"
16:0"	1:8" Tough blue clay + sand	+7:0"
14:0"	Very hard sand-silt + loam.	C.S.
0:0"	Some hard clay.	0:0"
30:0"		-7:0"
		C.S.

BORING #3

0:0"		+23:3"
1:0"	1:0" Concrete	+22:3"
13:3"	Tough yellow + blue clay	C.S.
14:3"		+9:0"
4:0"	Tough blue clay. Some sand seams.	C.S.
18:3"		+5:0"
20:3"	2:0" Hard loam + very fine sand.	+3:0"
		C.S.

City Datum

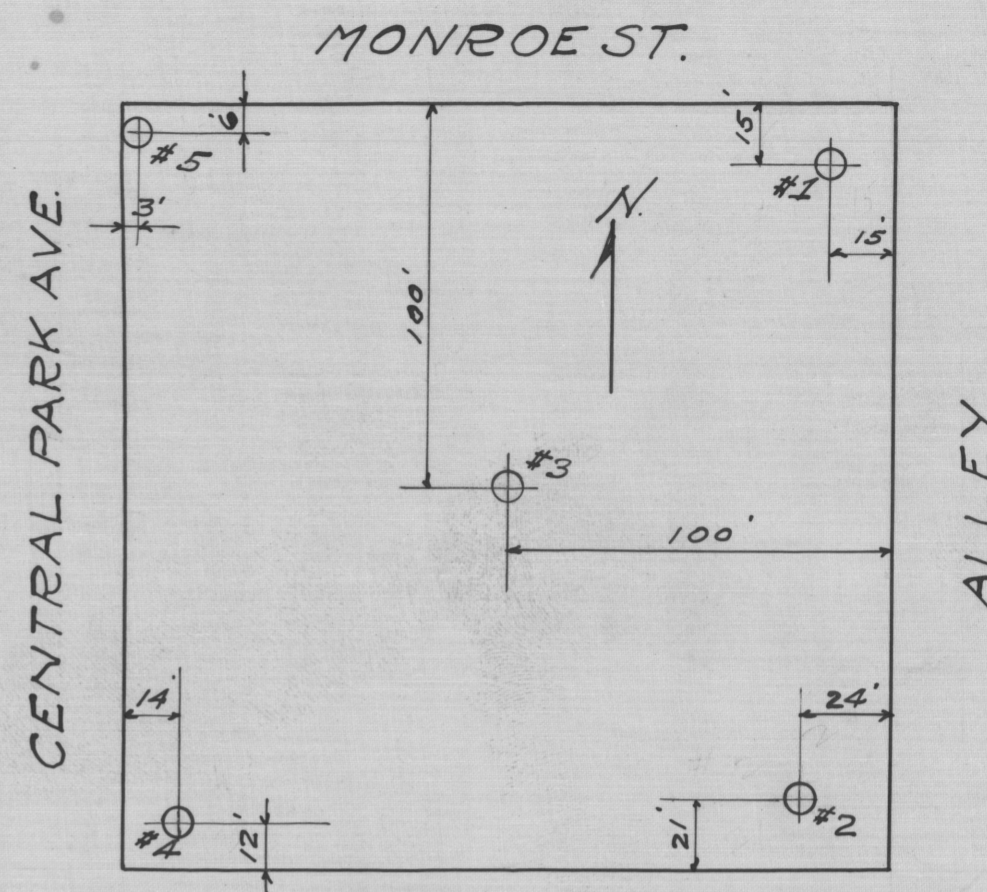
BORING #4

0:0"		+22:6"
1:0"	1:0" Black earth	+21:6"
3:0"	Black earth + clay fill.	+18:6"
6:6"	Tough yellow + blue clay.	C.S.
10:6"		+12:0"
3:8"	Tough blue clay.	C.S.
14:2"	Some sand.	+8:4"
10:10"	Very hard sand-silt + loam. Some hard clay.	C.S.
0:0"		0:0"
25:0"		-2:6"
		C.S.

BORING #5

0:0"		+22:10"
1:3"	1:3" Black earth	+21:7"
4:0"	2:0" Dirty clay.	+18:10"
6:8"	Tough yellow + blue clay.	C.S.
10:8"		+12:2"
12:9"	2:1" Tough blue clay.	C.S.
		+10:1"
12:9"	Hard blue clay-many loam + sand seams.	C.S.
0:0"		0:0"
25:6"		-2:8"
		C.S.

City Datum



Notes:-

C.S. indicates core sample taken at this point. It is not probable that Ground Water is present in the clay at this site in sufficient quantities to give much trouble in excavations in the clay. The sand and loam below Elev. +7:0" approximately is water bearing. This material stood well in drilling however and did not require casing to drill thru it. There is considerable variation in the bearing value of the ground at this site to Elev. +7:0" approx. but no soft pockets were encountered. Below this elevation the ground is all "grubbing ground," quite uniform in bearing value.

TEST BORINGS
SE. COR. CENTRAL PARK AVE AND MONROE ST.
CHICAGO ILL.

SMITH AND KNAPP
CIVIL ENGINEERS,
75 DEARBORN ST.
CHICAGO ILL.

MAP ROOM
4103
a-4
sh 214
ILLINOIS GEOLOGICAL
SURVEY LIBRARY

Sept 1927.

No 408
10-32