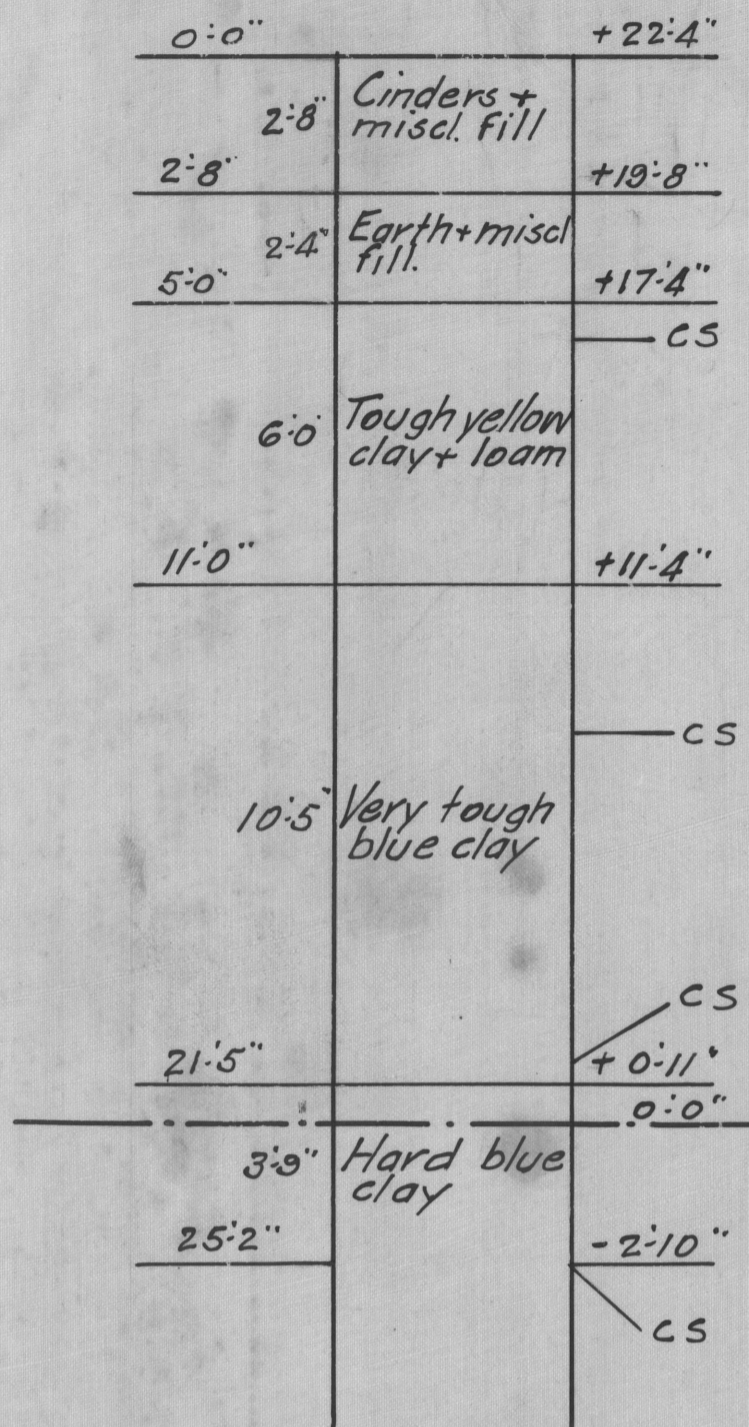
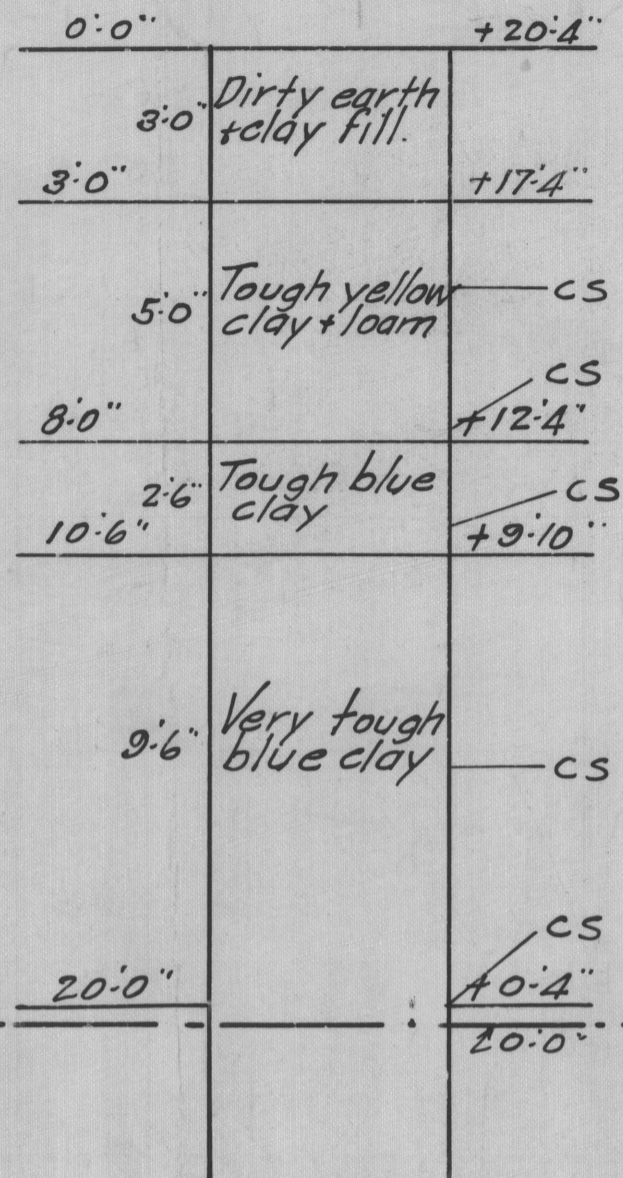


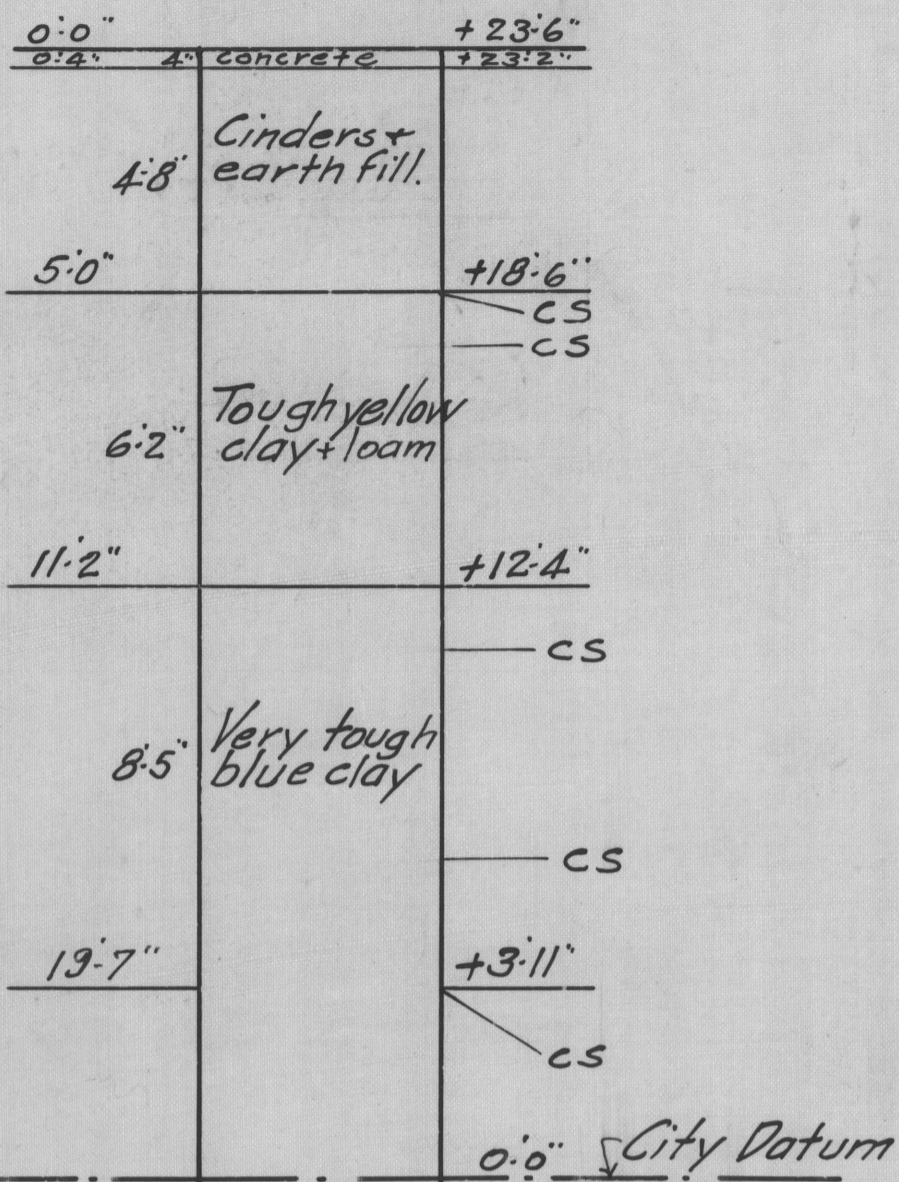
BORING #1



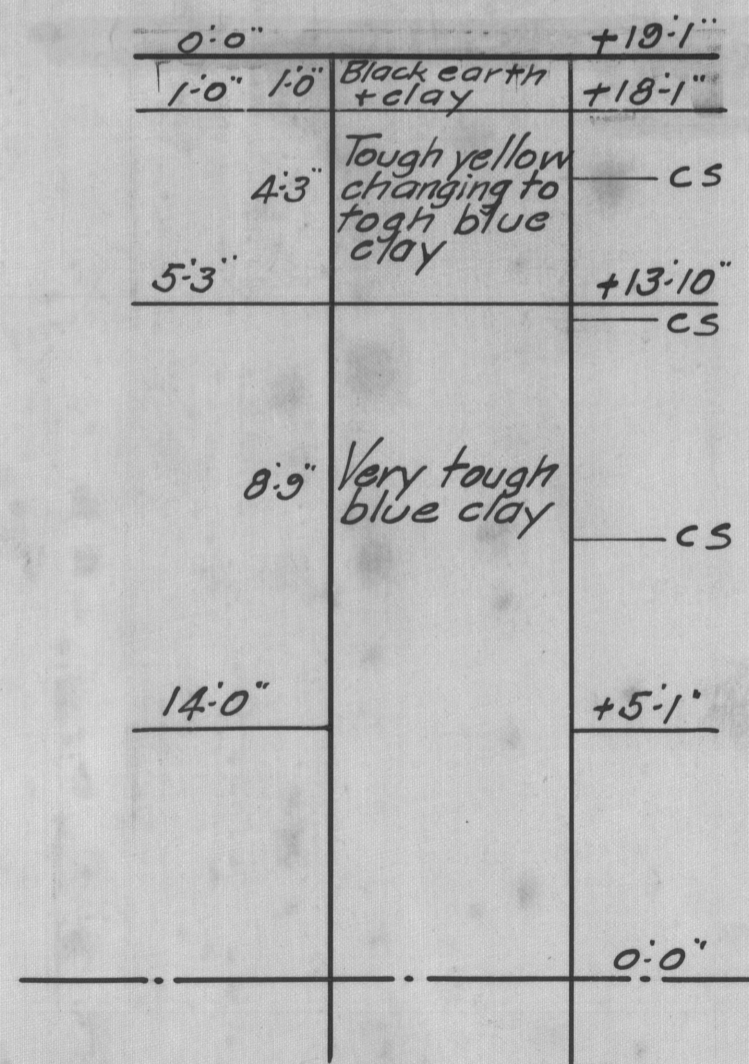
BORING #2



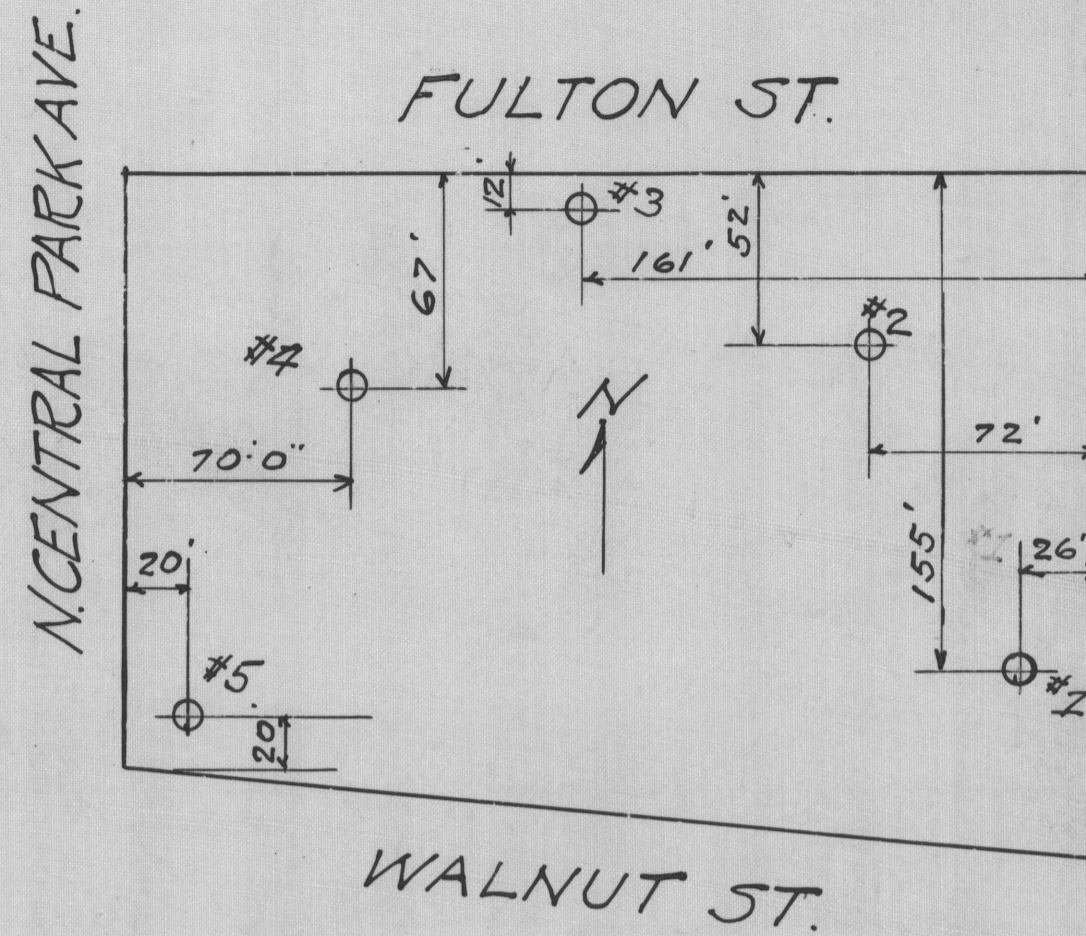
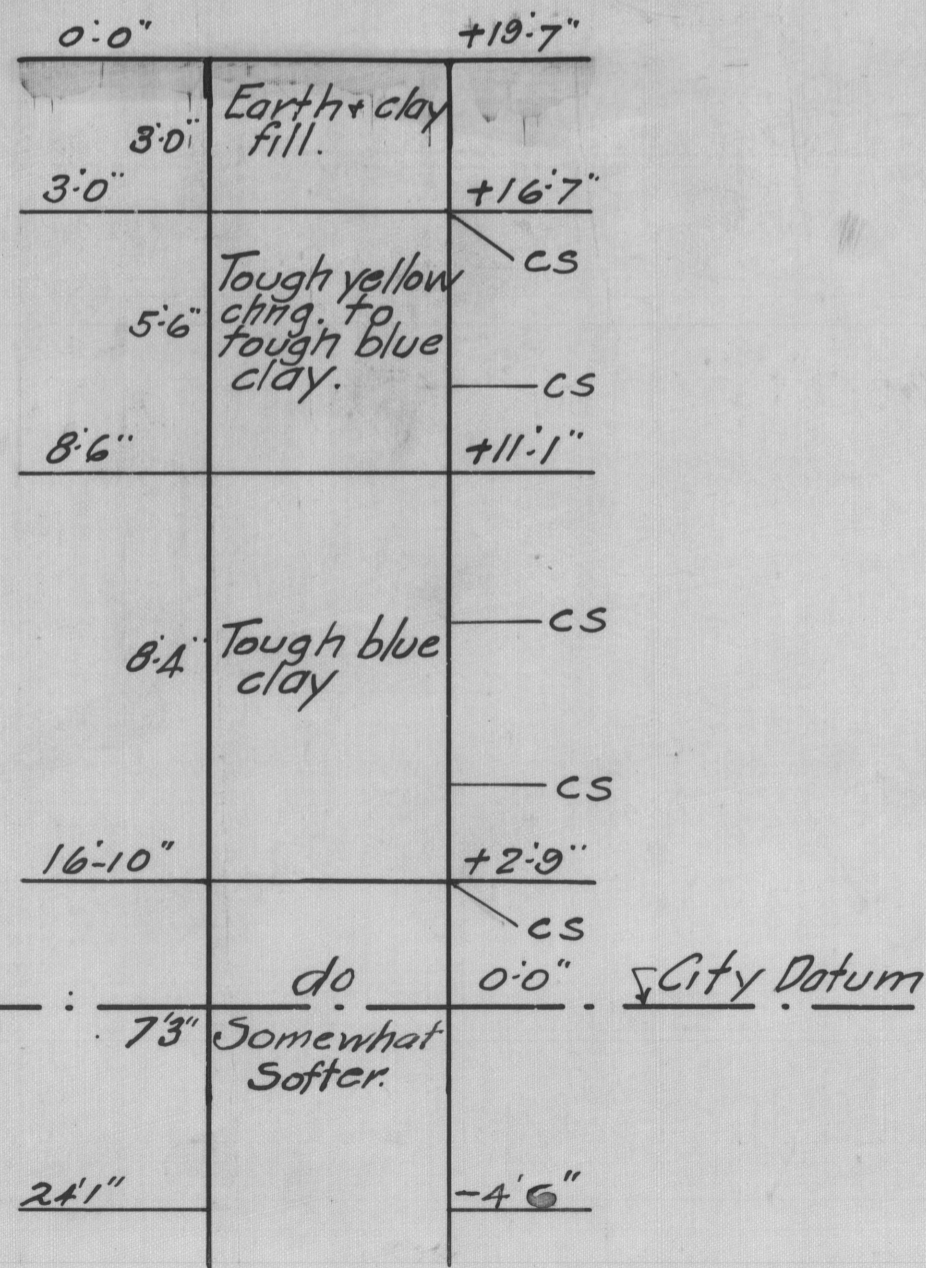
BORING #3



BORING #4



BORING #5



Notes:-  
 -CS indicates core sample taken at this point.  
 A small amount of Ground Water was encountered in these borings a few feet from the surface but not in a sufficient quantity to cause trouble in pier excavations.  
 The clay below Elev. +8:6" in #5 was appreciably softer than in the same zone in the other four borings but no soft clay was encountered.

TEST BORINGS.  
 S.E. COR. N. CENTRAL PARK AVE AND FULTON ST.  
 CHICAGO ILL.

SMITH AND KNAPP  
 CIVIL ENGINEERS  
 75 DEARBORN ST  
 CHICAGO ILL.

June 1926.

MAP ROOM  
 4103  
 a-4  
 sh 213  
 ILLINOIS GEOLOGICAL SURVEY LIBRARY