

BORING #1

0:0"		+38:1"
1:4"	1:4" Black earth	+36:9"
2:6"	1:2" Dirty clay	+35:7"
4:8"	2:2" Very tough yellow+blue clay.	+33:5"
		C.S.
3:4"	Hard yellow +blue clay.	
8:0"		+30:1"
		C.S.
3:4"	Hard blue clay.	
11:4"		+26:9"
		C.S.
5:3"	Tough blue clay.	
16:7"		+21:6"
		C.S.

BORING #2

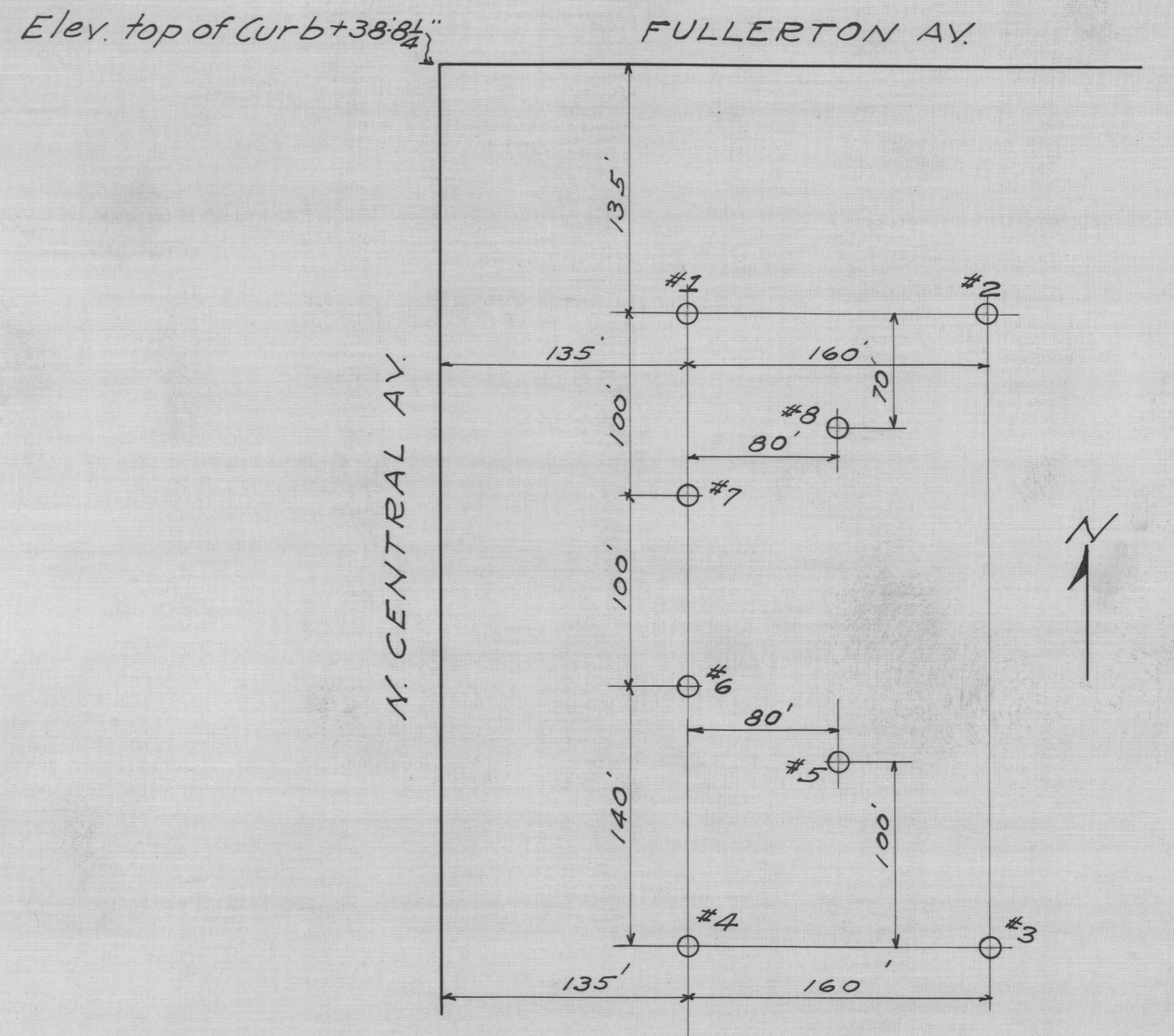
0:0"		+38:1"
1:4"	1:4" Black earth	+36:9"
4:8"	Tough yellow +blue clay silty.	
6:0"		+32:1"
		C.S.
4:3"	Hard yellow +blue clay	
10:3"		+27:10"
		C.S.
2:1"	Very tough blue clay	
12:4"		+25:9"
		C.S.
3:8"	Tough blue clay.	
16:0"		+22:1"
		C.S.

BORING #3

0:0"		+38:2"
1:3"	1:3" Black earth	+36:11"
2:4"	1:1" Dirty clay	+35:10"
8:1"	Hard yellow +blue clay	
		C.S.
10:5"		+27:9"
		C.S.
5:7"	Tough blue clay.	
16:0"		+22:2"
		C.S.

BORING #4

0:0"		+38:4"
1:5"	1:5" Black earth	+36:11"
6:1"	Hard yellow +blue clay	
		C.S.
7:6"		+30:10"
		C.S.
4:11"	Hard blue clay.	
12:5"		+25:11"
		C.S.
2:7"	Tough blue clay.	
15:0"		+23:4"
		C.S.



Notes:-
 C.S. indicates core sample taken at this point.
 These Borings were drilled 2' to 3' into the clay with auger; no Ground Water encountered. The upper clay was very dry and crumbly, due to a long period of dry weather. No soft pockets were encountered in any of these Borings.
 #5 to #8 were drilled to a depth of 4' to 5' with an auger; good hard clay encountered in each of them at 1:6" to 2' below the surface.

MAP ROOM
 4103
 a-4
 sh 212
 ILLINOIS GEOLOGICAL
 SURVEY LIBRARY

TEST BORINGS
 BOARD OF EDUCATION.
 S.E. COR. N. CENTRAL AND FULLERTON AVS.
 CHICAGO ILL.

March 1931. ✓

SMITH AND KNAPP
 CIVIL ENGINEERS
 75. DEARBORN ST.
 CHICAGO ILL.