

BORING #1

BORING #2

BORING #3

BORING #4

BORING #5

BORING #6

BORING #7

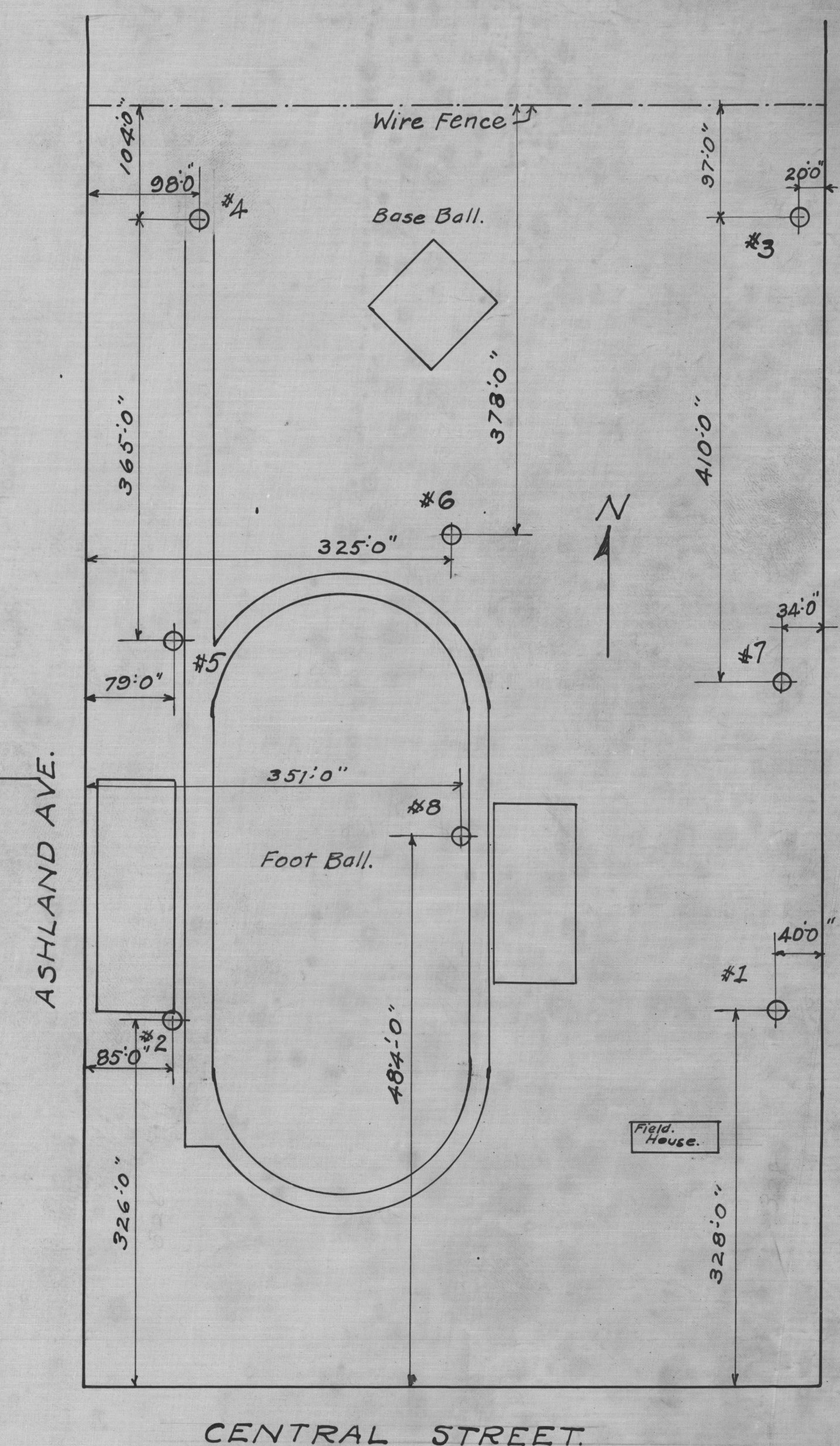
BORING #8

BORING #1	BORING #2	BORING #3	BORING #4	BORING #5	BORING #6	BORING #7	BORING #8
0:0" - 1:2" Black earth +24:0"	1:5" - 1:5" Black earth +24:10"	0:8" - 8" Sandy black earth +26:0"	0:10" - 10" Sandy black earth +25:11"	1:0" - 1:0" Sandy black earth +25:2"	0:11" - 11" Black earth-loam +24:5"	1:0" - 1:0" Sand black earth +24:7"	1:2" - 1:2" sandy black earth +24:5"
1:2" - 1:2" Yellow sandy loam +22:10"	1:5" - 1:7" Yellow sand + loam-stony +23:5"	1:0" - 4:10" Yellow sand loam-coarse gravel-stony water +25:4"	2:11" - 2:1" Yellow sandy loam-stony water +23:0"	3:0" - 2:0" Yellow sandy loam water +22:2"	2:2" - 1:3" Yellow sandy loam +22:3"	3:1" - 3:1" Yellow sand + gravel water +23:7"	3:4" - 3:4" Yellow sand + loam water +23:3"
4:6" - 3:4" Yellow sandy loam +19:6"	4:9" - 1:9" Yellow sand + loam-some clay +20:1"	5:6" - 5:6" Hard blue clay +20:6"	7:7" - 7:7" Hard yellow clay S	4:4" - 1:4" Yellow sand and gravel +20:10"	2:11" - 9" Yellow sand-gravel +21:6"	4:1" - 4:1" Yellow sand + gravel +20:6"	4:6" - 4:6" Hard yellow clay +19:11"
7:0" - 2:6" do some clay +17:0"	6:9" - 6:9" Hard yellow clay + loam stony S	10:6" - 5:0" Hard blue clay S	10:6" - 7:7" Hard yellow clay S	8:0" - 3:8" Hard yellow clay +17:2"	7:9" - 4:10" Yellow sandy clay-hard S	4:2" - 4:2" Hard blue clay +15:11"	9:4" - 4:10" Hard yellow clay +15:1"
8:0" - 8:0" Tough yellow clay changing to blue clay S	11:6" - 11:6" Tough blue clay +13:4"	14:0" - 3:6" Very tough blue clay sandy +12:0"	18:11" - 7:7" Very tough blue clay S	11:1" - 11:1" Very tough blue clay S	9:3" - 9:3" Very tough blue clay S	12:6" - 3:10" Very tough blue clay +12:1"	10:8" - 9:4" Very tough blue clay S
15:0" - 15:0" Tough blue clay and sand +9:0"	11:10" - 11:10" Tough blue clay S	20:0" - 6:0" Fine sand clean-compact S	18:11" - 18:11" do some what softer +7:10"	19:11" - 19:11" do some what softer +6:1"	17:0" - 3:0" do some what softer +7:5"	14:0" - 1:6" Tough blue clay +10:7"	20:0" - 20:0" Very tough blue clay S
16:4" - 1:4" Very tough blue clay +7:8"	23:4" - 3:2" Very tough blue clay +1:6"	23:0" - 3:0" Tough blue clay +3:0"	11:7" - 11:7" Very tough blue clay S	20:0" - 3:0" do some what softer +4:5"	21:0" - 4:8" Sandy clay + gravel tough +3:7"	16:4" - 2:4" Fine gray sand-clean + compact +8:3"	20:0" - 20:0" Very tough blue clay S
18:0" - 1:8" Tough blue clay +6:8"	26:6" - 4:6" Tough blue clay sandy -1:8"	24:9" - 1:9" Very tough blue clay sandy +1:3"	30:0" - 30:0" Very tough blue clay S	20:0" - 20:0" do some what softer +4:5"	21:0" - 21:0" Sandy clay + gravel tough +3:7"	19:11" - 19:11" do some what softer +6:1"	20:0" - 20:0" Very tough blue clay S
27:4" - 4:2" Blue clay some what tougher -3:4"	31:0" - 3:2" Tough blue clay + sand seam -6:2"	27:0" - 2:3" Tough blue clay + sand seams -1:0"	30:0" - 30:0" Very tough blue clay S	20:0" - 20:0" do some what softer +4:5"	21:0" - 21:0" Sandy clay + gravel tough +3:7"	19:11" - 19:11" do some what softer +6:1"	20:0" - 20:0" Very tough blue clay S
31:6" - 3:6" Tough blue clay -7:6"	32:2" - 1:2" Hard clay + sand seam -7:4"	27:0" - 2:3" Tough blue clay + sand seams -1:0"	30:0" - 30:0" Very tough blue clay S	20:0" - 20:0" do some what softer +4:5"	21:0" - 21:0" Sandy clay + gravel tough +3:7"	19:11" - 19:11" do some what softer +6:1"	20:0" - 20:0" Very tough blue clay S
35:0" - 3:6" Tough blue clay -11:0"	35:0" - 2:10" Tough blue clay -10:2"	27:0" - 2:3" Tough blue clay + sand seams -1:0"	30:0" - 30:0" Very tough blue clay S	20:0" - 20:0" do some what softer +4:5"	21:0" - 21:0" Sandy clay + gravel tough +3:7"	19:11" - 19:11" do some what softer +6:1"	20:0" - 20:0" Very tough blue clay S
53:2" - 18:2" Stiff blue clay S	49:0" - 14:0" Stiff blue clay S	27:6" - 27:6" Stiff blue clay S	30:0" - 30:0" Very tough blue clay S	20:0" - 20:0" do some what softer +4:5"	21:0" - 21:0" Sandy clay + gravel tough +3:7"	19:11" - 19:11" do some what softer +6:1"	20:0" - 20:0" Very tough blue clay S
65:0" - 11:10" Very tough blue clay S	51:3" - 2:9" Tough blue clay -24:2"	54:6" - 4:0" Tough blue clay + sand seams -32:6"	30:0" - 30:0" Very tough blue clay S	20:0" - 20:0" do some what softer +4:5"	21:0" - 21:0" Sandy clay + gravel tough +3:7"	19:11" - 19:11" do some what softer +6:1"	20:0" - 20:0" Very tough blue clay S
65:0" - 65:0" Very tough blue clay S	51:3" - 2:9" Tough blue clay -26:11"	58:6" - 6:6" Stiff blue clay + sand seams -39:0"	30:0" - 30:0" Very tough blue clay S	20:0" - 20:0" do some what softer +4:5"	21:0" - 21:0" Sandy clay + gravel tough +3:7"	19:11" - 19:11" do some what softer +6:1"	20:0" - 20:0" Very tough blue clay S
65:0" - 65:0" Very tough blue clay S	51:3" - 2:9" Tough blue clay -26:11"	65:0" - 12:5" Very tough blue clay + sand seams -51:5"	30:0" - 30:0" Very tough blue clay S	20:0" - 20:0" do some what softer +4:5"	21:0" - 21:0" Sandy clay + gravel tough +3:7"	19:11" - 19:11" do some what softer +6:1"	20:0" - 20:0" Very tough blue clay S
65:0" - 65:0" Very tough blue clay S	51:3" - 2:9" Tough blue clay -26:11"	77:5" - 78:0" Hard blue clay -52:0"	30:0" - 30:0" Very tough blue clay S	20:0" - 20:0" do some what softer +4:5"	21:0" - 21:0" Sandy clay + gravel tough +3:7"	19:11" - 19:11" do some what softer +6:1"	20:0" - 20:0" Very tough blue clay S

Evanston City Datum

Notes:-

S Indicates sample taken at this point.
 Elevations are referred to Evanston City Datum - B.M. is top rim of Man Hole cover at intersection of Central Street and Ashland Ave. - Elev. +23.45 secured from the Engineers Office, City Hall.
 Ground water stood at elevations shown. No water was encountered in #6, which was drilled with an augur.
 The clay from a depth of 7' to 12' in #1 is appreciably softer than in any of the other borings; below a depth of 12' the soil in #1 is as favorable as was found in most of the holes drilled.
 The sand encountered at depths 14' to 20' in #3 and #7 is probably pockets, rather than seams of sand of considerable area. This sand was all compact.



TEST BORINGS
 FOR THE
 NORTHWESTERN UNIVERSITY STADIUM.
 CENTRAL ST. AND ASHLAND AVE.
 EVANSTON ILL.

SMITH AND KNAPP
 CIVIL ENGINEERS.
 7 S. DEARBORN ST.
 CHICAGO ILL.

APRIL 1925.

MAP ROOM
 4103
 9-4
 SH 211
 ILLINOIS GEOLOGICAL
 SURVEY LIBRARY